

## DIY Kit Guide

Hi there!

A warm thanks from the IECL team for choosing our services. We have designed this kit to be as convenient and useful for our clients as possible, keeping things clear and easy-to-understand at every step.

Please enjoy your DIY sampling experience!



Included in your kit rental:

- Air Sampling Pump + Cable
- Air-O-Cell Cassette(s)
- BioTape(s)
- A Chain of Custody form
- Return express postage bag



Identify Mould



Understand your air quality

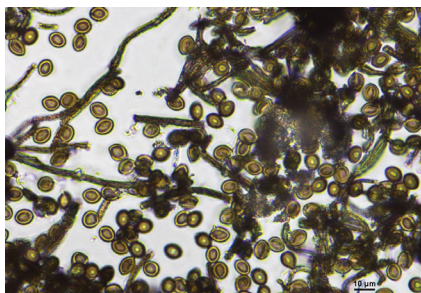


Get actionable results

## Lab Analysis



Examined by qualified environmental professionals



Analysed carefully to understand the problem.



A Report is written to give you clear next steps.

### Have you paid for Analysis?

Go to the "Sales" page of "ieclabs.com.au" (or scan this QR code) and order the required number of tests for the samples you have taken (e.g. If TWO (2) air samples and ONE (1) surface sample were taken, then purchase TWO Air-O-Cell lab fees and ONE Bio-Tape lab fee). You will be asked to provide your contact details. Please take note of the receipt number and include it on the Chain of Custody form.



## Air Sampling



Write a sample number ("1" if it's your first sample) and location description (e.g. office) on the Cassette. Take off both sticker seals (save these for resealing later).



Firmly place the outtake hole of the Cassette into the head of the Air Pump. Hold the Pump in your hand at least 30cm away from any surface in the room.

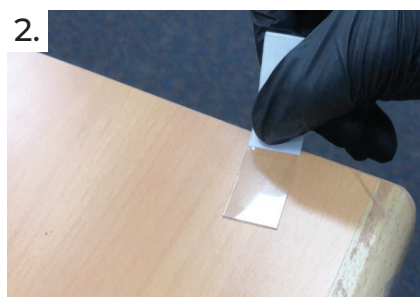


Turn the Pump on and hold it in place for 5 minutes, minimizing movement from its original position. Once finished, reseal the Cassette, & return it to the zip-lock bag.

## Surface Sampling



Put on gloves. Write a sample number and location description on the BioTape label. When ready to sample, hold by the label & peel off the plastic.



Try not to accidentally touch the adhesive (this could contaminate your sample). Press the exposed adhesive side onto the intended surface for 2 seconds and then release.



Place the sample back into the case and close it. Return all used samples to the zip-lock bag.

## Send Your Samples Back

1. Place the Air Pump and all used samples back into the box.
2. Fill out the Chain of Custody form, including your receipt number, then place it in the box.
3. Send the box back to us at the provided address.
4. *Please note we require the DIY Mould Testing Kit to be returned within 14 days after delivery.*



Repack for delivery



IECL, 5/158 Murarrie Rd  
Murrarie, QLD 4172